

LEGEND

This map highlights undeveloped natural areas likely to provide core habitat blocks and habitat connections that facilitate species movements between blocks. Undeveloped habitat blocks provide relatively undisturbed habitat conditions required by many of Maine's species. Habitat connections provide necessary opportunities for wildlife to travel between preferred habitat types in search for food, water, and mates. Roads and development fragment habitat blocks and can be barriers to moving wildlife. By maintaining a network of interconnected blocks towns and land trusts can protect a wide variety of Maine's species—both rare and common—to help ensure rich species diversity long into the future. Maintaining a network of these large rural open spaces also protects future opportunities for forestry, agriculture, and outdoor recreation.

- Organized Township Boundary
- Unorganized Township
- Selected Town or Area of Interest

Habitat Blocks

- Development Buffer (pale transparency)**
250-500 foot buffer around improved roads and developed areas based on development intensity.
- Undeveloped Habitat Block**
Remaining land outside of Development Buffers. Blocks greater than 100 acres are labeled with their estimated acreage.

Approximate Road Crossing Habitat Connections

Represented habitat connections identified through computer modeling highlight locations where quality habitat is likely to occur on both sides of a given road between undeveloped habitat blocks greater than 100 acres and between higher value wetlands. These representations are approximate and have not been field verified.

Undeveloped Block Connectors

Likely road crossing areas linking undeveloped habitat blocks greater than 100 acres. The threat of habitat fragmentation and animal mortality corresponds to traffic volume.

- Yellow lines represent habitat road crossings with daily traffic volumes less than 2000 vehicles per day.
- Red lines represent habitat road crossings with daily traffic volumes greater than 2000 vehicles per day.

Riparian Connectors

Likely crossing locations for wetland dependent species moving between waterways and wetlands divided by roads.

- Blue lines represent riparian road crossings with daily traffic volumes less than 2000 vehicles per day.
- Purple lines represent riparian road crossings with daily traffic volumes greater than 2000 vehicles per day.

Highway Bridge Connectors

Highway bridges along I-95 and I-295 that span riparian habitat connecting adjacent but separated habitat blocks. These are locations where species are likely to take advantage of infrastructure to move between habitat blocks.

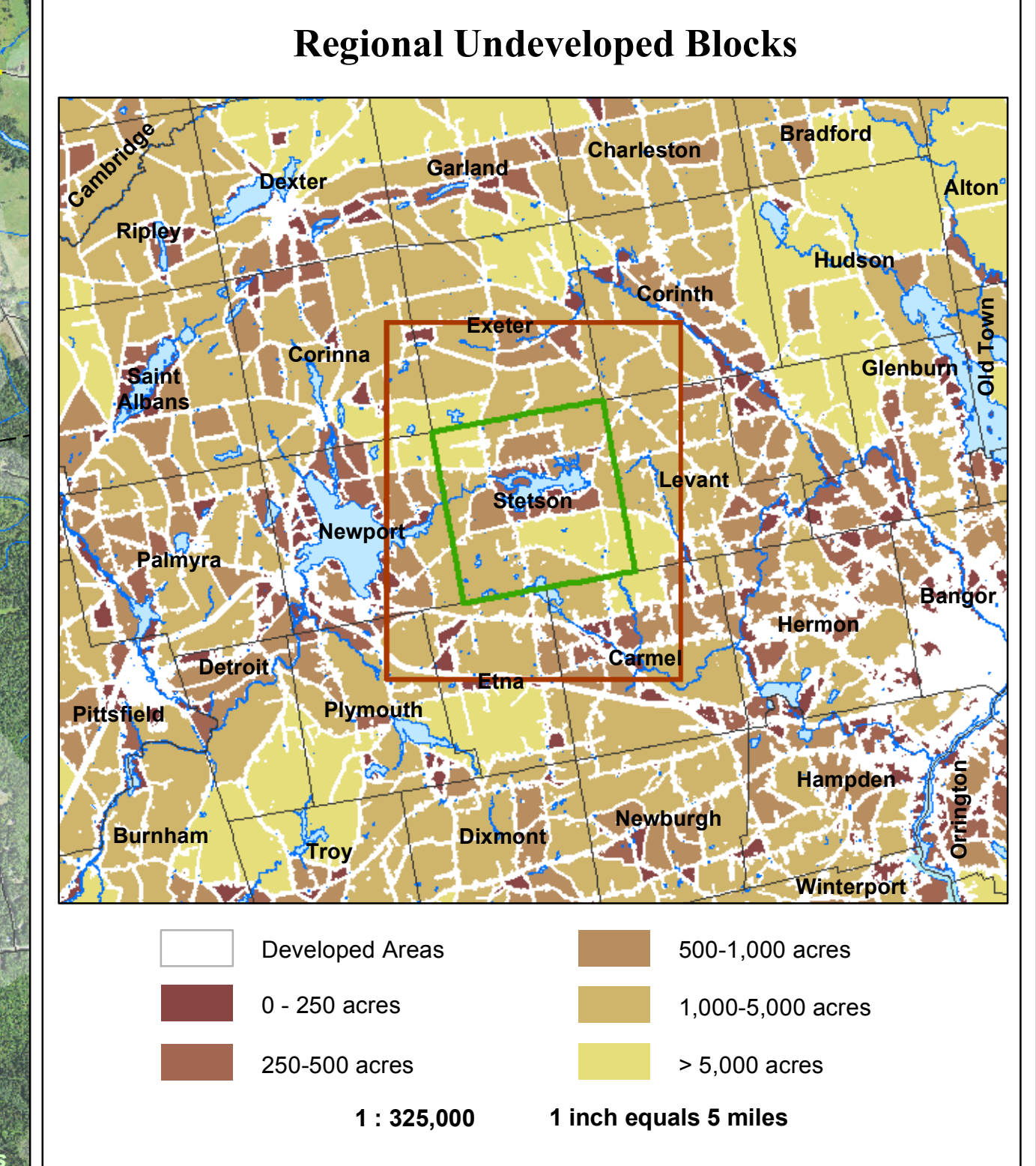
Conserved Lands

The State of Maine's conserved lands database includes lands in federal, state, and non-profit ownership. It does not include many privately owned conservation lands, especially those protected by local land trusts, or town owned conservation lands. For the most accurate and current information about land ownership, consult with the local assessor and/or other local land management agencies. If public access potential to any of the properties displayed here is uncertain, landowners should be contacted to determine if permission is necessary.

- Ownership Type (transparent layers)**
- Federal**
National parks, forests, and wildlife refuges. (Includes Canadian conserved lands.)
 - State**
 - Municipal**
Town parks, athletic fields, community forests, etc.
 - Private Conservation**
Properties owned and managed by private (usually non-profit) organizations such as The Nature Conservancy, Maine Coast Heritage Trust, Trust for Public Land, and local land trusts.
 - Easement**
Voluntary legal agreements that allow landowners to realize economic benefit by permanently restricting the amount and type of future development and other uses on all or part of their property as they continue to own and use it.

Aerial Imagery

Aerial imagery is often the best tool available to visualize existing patterns of development and resulting changes in the natural landscape. By depicting undeveloped habitat blocks, habitat connectors and conserved lands with aerial photos, the map user can more easily identify opportunities to expand the size and ecological effectiveness of local conservation efforts.



Data Sources

DATA SOURCE INFORMATION
 (note: italicized file names can be downloaded from Maine Office of GIS)

TOWNSHIP BOUNDARIES
 Maine Office of GIS (2006); metwp24

ROADS
 Maine Office of GIS, Maine Department of Transportation (2005); medotpb

HYDROLOGY
 Maine Office of GIS, U.S. Geological Survey (2004); hyd24

UNDEVELOPED HABITAT BLOCKS, DEVELOPMENT BUFFER, CONNECTORS
 Beginning with Habitat

CONSERVATION LANDS
 Bureau of Parks and Land, Land Use Regularity Commission, Department of Inland Fisheries and Wildlife, State Planning Office (2012); conserved_land

AERIAL IMAGERY
 U.S. Department of Agriculture: NAIP 2011 - state-wide 1-meter color orthoimagery

DATA SOURCE CONTACT INFORMATION
 Maine Office of GIS - <http://www.maine.gov/megis/catalog/>
 Maine Natural Areas Program - <http://www.maine.gov/doc/nmap/>
 Maine Dept. of Inland Fisheries & Wildlife - <http://www.maine.gov/ifw/>
 Maine Department of Transportation - <http://www.maine.gov/mdot/>
 Maine Department of Environmental Protection - <http://www.maine.gov/dep/>

DIGITAL DATA REQUEST
 To request digital data for a town or organization, visit our website:
http://www.beginningwithhabitat.org/the_maps/gis_data_request.html